

Deutsche  
Qualität  
Garantiert



# ECLIPSE

ULTRA BLACK  
series

For Elegant Living

30  
years  
Performance  
Guarantee

15  
years  
Product  
Warranty

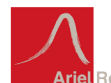
MONO-CRYSTALLINE PV MODULES  
SHINGLED TECHNOLOGY • MONO-FACIAL

## 395W-410W

### AE BMC-60E Series

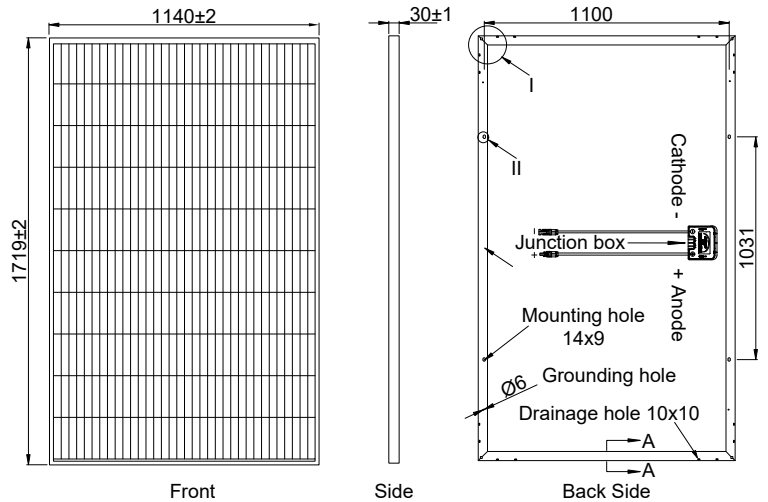


IEC 61215  
IEC 61730  
Regular Production Surveillance  
Type Tested and Monitored



### Mechanical and design specification

Cell type	Mono c-Si PERC, Shingled cells, 166 mm
No. of cells	340
Glass	3,2 mm, high transmission, AR coated, tempered
Encapsulation	EVA
Back cover	White-black Backsheet
Junction box	IP 68 rated
Frame	30 mm anodized Aluminium alloy, full black
Cable	1 x 4 mm <sup>2</sup> , 1200 mm length or customized
Connectors	MC 4 / MC 4 compatible
Dimension	1719 mm x 1140 mm x 30 mm
Weight	21 kg
Hail resistance	Max. Ø 25 mm at 23 m/s
Wind load	2400 Pa/ 244 kg/ m <sup>2</sup>
Mechanical load	5400 Pa/ 550 kg/ m <sup>2</sup>

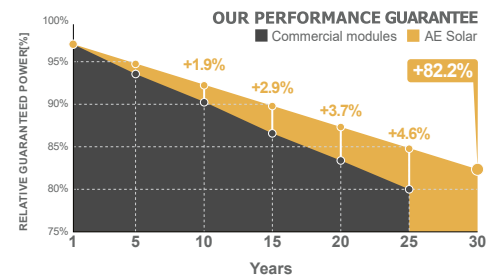
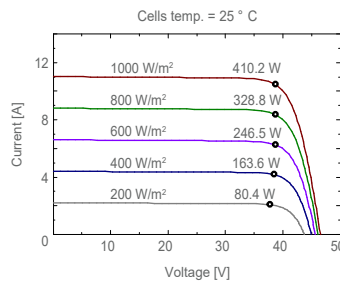
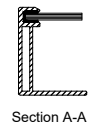
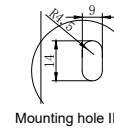
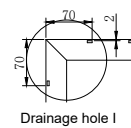


### Packaging information

Packaging configuration	72 pcs / pallet
Loading capacity	936 pcs / 40 HQ
Size / Pallet	1750 mm x 1140 mm x 2490 mm
Weight	1612 kg / double pallets

### Temperature ratings

Operating temperature	(°C)	-40 to +85
Temp.coefficient of P <sub>max</sub>	(%/°C)	-0.34
Temp.coefficient of V <sub>oc</sub>	(%/°C)	-0.27
Temp.coefficient of I <sub>sc</sub>	(%/°C)	0.040
Nom. operating temp. NOCT	(°C)	42.3 ± 2



Electrical specifications (STC*):		AE395BMC-60E	AE400BMC-60E	AE405BMC-60E	AE410BMC-60E
Nominal Max. Power	P <sub>max</sub> (Wp)	395	400	405	410
Maximum operating voltage	V <sub>MPP</sub> (V)	38.5	38.6	38.7	38.8
Maximum operating current	I <sub>MPP</sub> (A)	10.26	10.36	10.47	10.57
Open-circuit voltage	V <sub>oc</sub> (V)	46.3	46.4	46.5	46.6
Short-circuit current	I <sub>sc</sub> (A)	10.92	10.97	11.02	11.07
Module efficiency	η (%)	20.16	20.41	20.67	20.92
Power tolerance	(W)			0~+5	
Maximum system Voltage	(V)			1500	
Maximum series fuse rating	(A)			20	

\*STC: Standard test conditions (Irradiance 1000 W/m<sup>2</sup>, Cell temperature 25°C and air mass of AM1.5)

Electrical specifications (NMOT*):		AE395BMC-60E	AE400BMC-60E	AE405BMC-60E	AE410BMC-60E
Nominal Max. Power	P <sub>max</sub> (Wp)	297	301	305	309
Maximum operating voltage	V <sub>MPP</sub> (V)	36.7	36.8	36.9	37.0
Maximum operating current	I <sub>MPP</sub> (A)	8.10	8.18	8.27	8.35
Open-circuit voltage	V <sub>oc</sub> (V)	44.1	44.2	44.3	44.4
Short-circuit current	I <sub>sc</sub> (A)	8.81	8.85	8.89	8.93

\*NMOT: Normal Module Operating Temperature (Irradiance 800 W/m<sup>2</sup>, Ambient temperature 20°C, air mass of AM1.5 and wind speed of 1 m/s)

The specifications and characteristics contained in this datasheet may deviate slightly from our actual products due to the product developments and uncertainty of measurement devices. The specifications included in the datasheet are subject to change without prior notice.